



51218 CHRISTIAN DRIVE | SOUTH BEND, IN



THE AUGUSTA

FEATURES:

- Large Open Great Room
- Kitchen with Walk-In Pantry & Bar
- Stainless Steel Appliances
- 10ft & 9ft Ceilings on the 1st Floor
- LP Siding & Stone
- Wood Beams in Great Room
- Large Covered Patio
- Stamped Concrete Porch & Sidewalk
- Quartz Countertop
- Andersen Casement Windows
- 7ft interior Doors
- Linear Fireplace
- Large Walk Through Shower
- Glass Overhead Doors
- Engineered hardwood floors
- 4.7 Miles to University of Notre Dame
- 4.8 Miles to the Toll Road
- 6.5 Miles to Memorial Hospital

PRICE COMING SOON

CONTACT US



SCHROCKHOMES.COM



574-534-2706



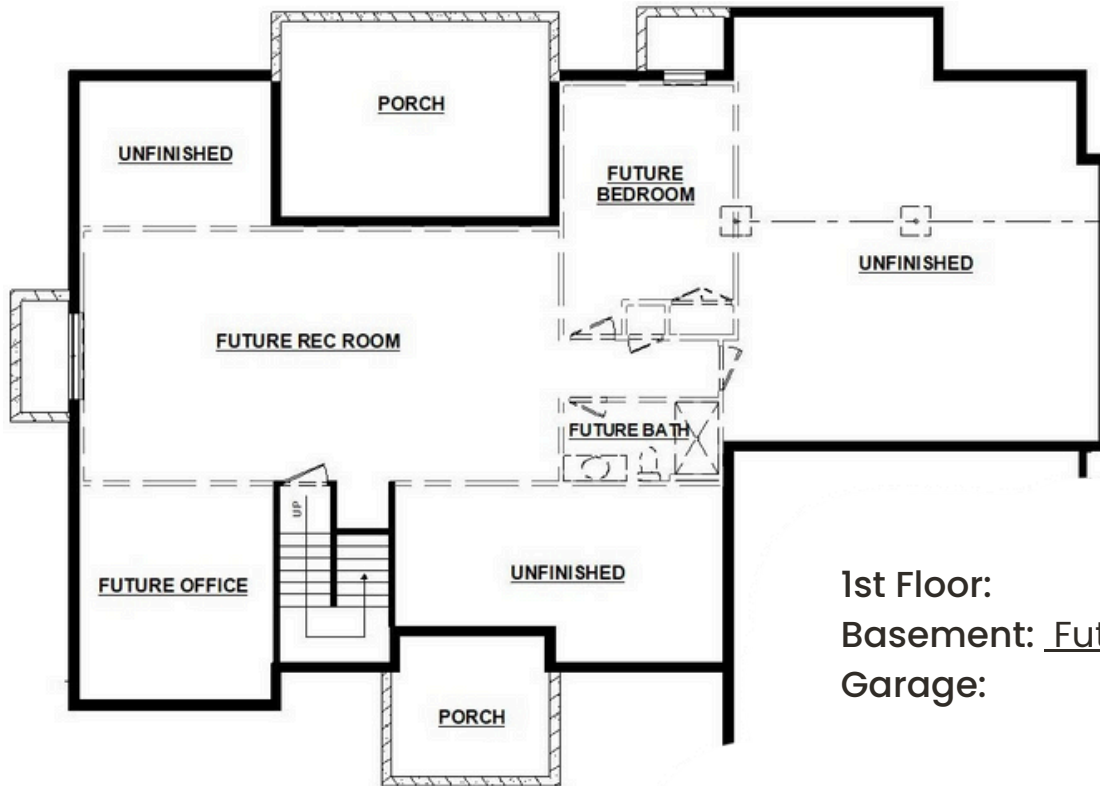
2523 MESSICK DRIVE | GOSHEN, IN



DESIGN AND QUALITY - A TRADITION



3
 2.5
 3



1st Floor: 2,432 sq.ft
 Basement: Future Finished
 Garage: 773 sq.ft.



SCHROCKHOMES.COM



574-534-2706



2523 MESSICK DRIVE | GOSHEN, IN